

MINI ASSEMBLAGE P.U.D. PLAT SEVEN

ALSO KNOWN AS GREYSTONE P.U.D.

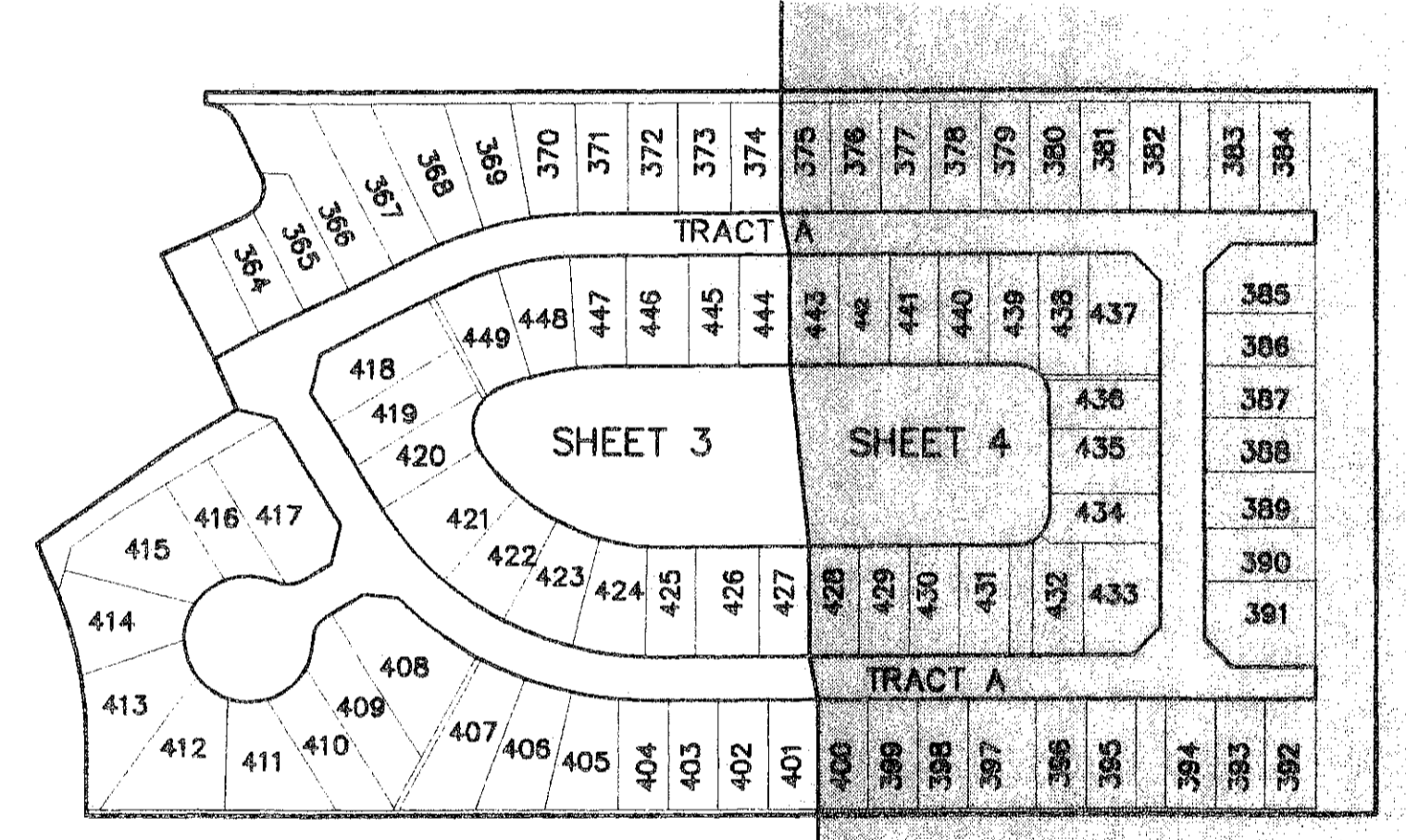
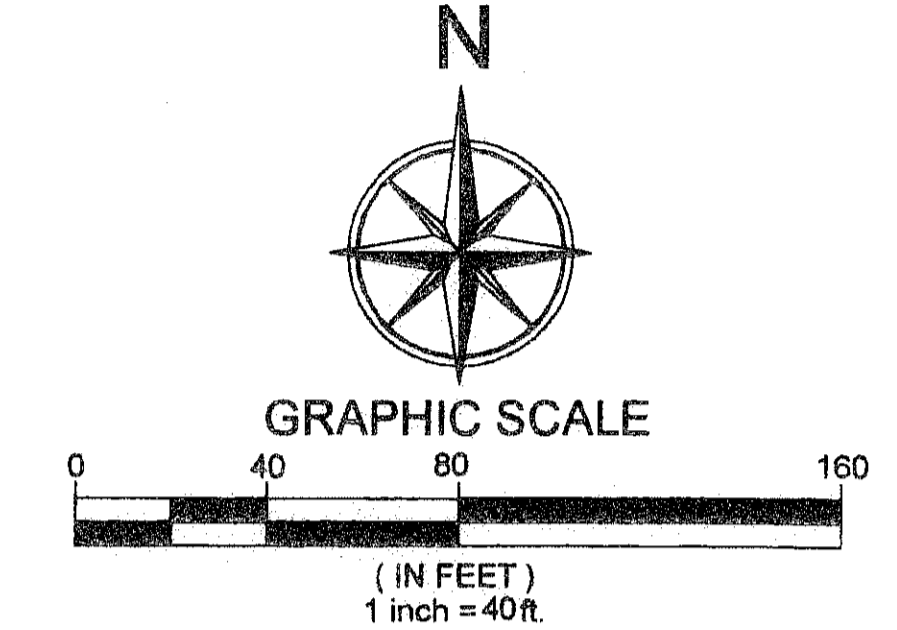
BEING A REPLAT OF ALL OF TRACTS 54, AND 55 AND A PORTION OF TRACTS 53 AND 56, BLOCK 55, PALM BEACH FARMS COMPANY PLAT NO. 3, RECORDED IN PLAT BOOK 2, PAGES 45 THROUGH 54, PUBLIC RECORDS OF PALM BEACH COUNTY FLORIDA, BEING IN SECTION 28, TOWNSHIP 45 SOUTH, RANGE 42 EAST PALM BEACH COUNTY, STATE OF FLORIDA

FEBRUARY 2009 SHEET 4 OF 4

170

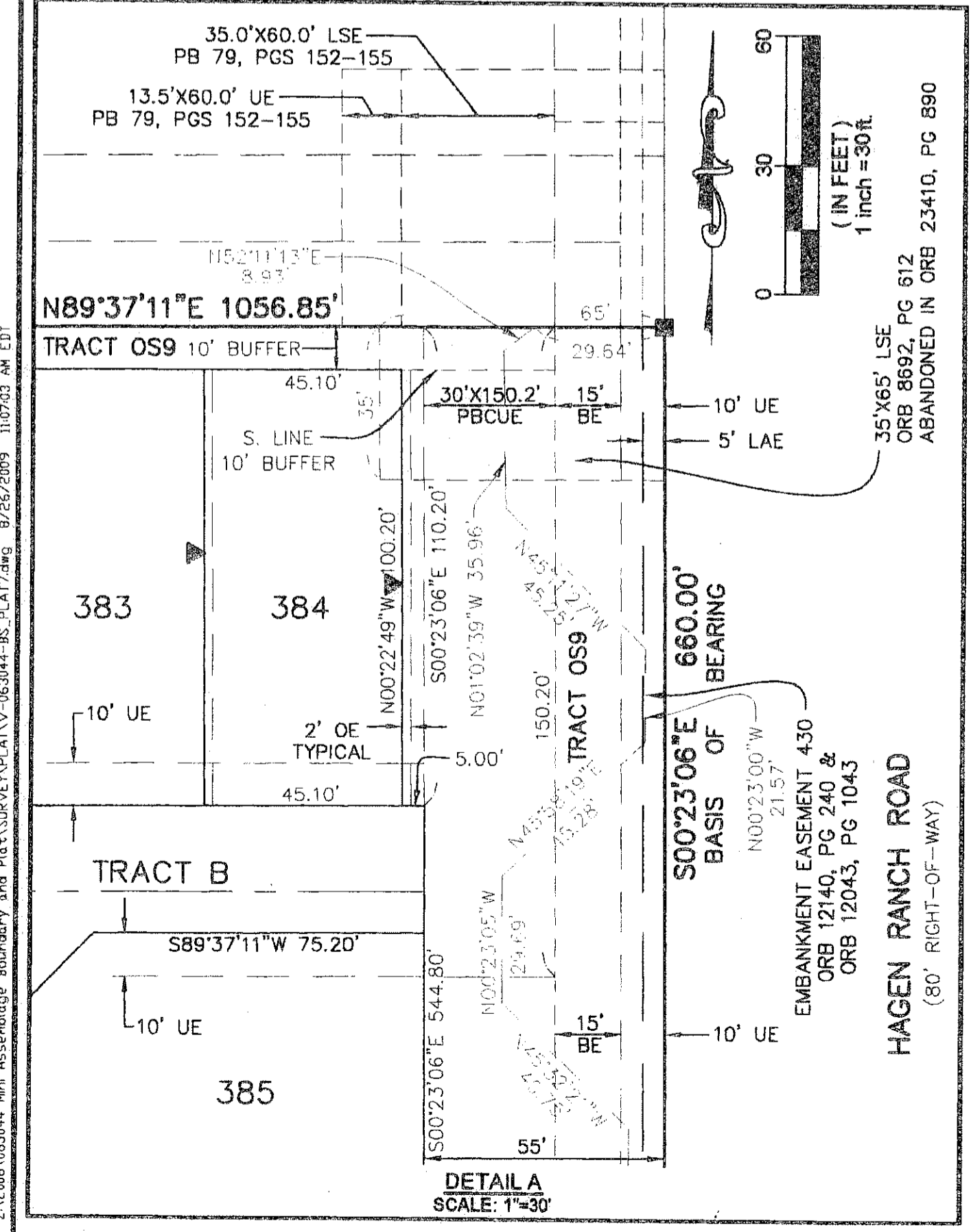
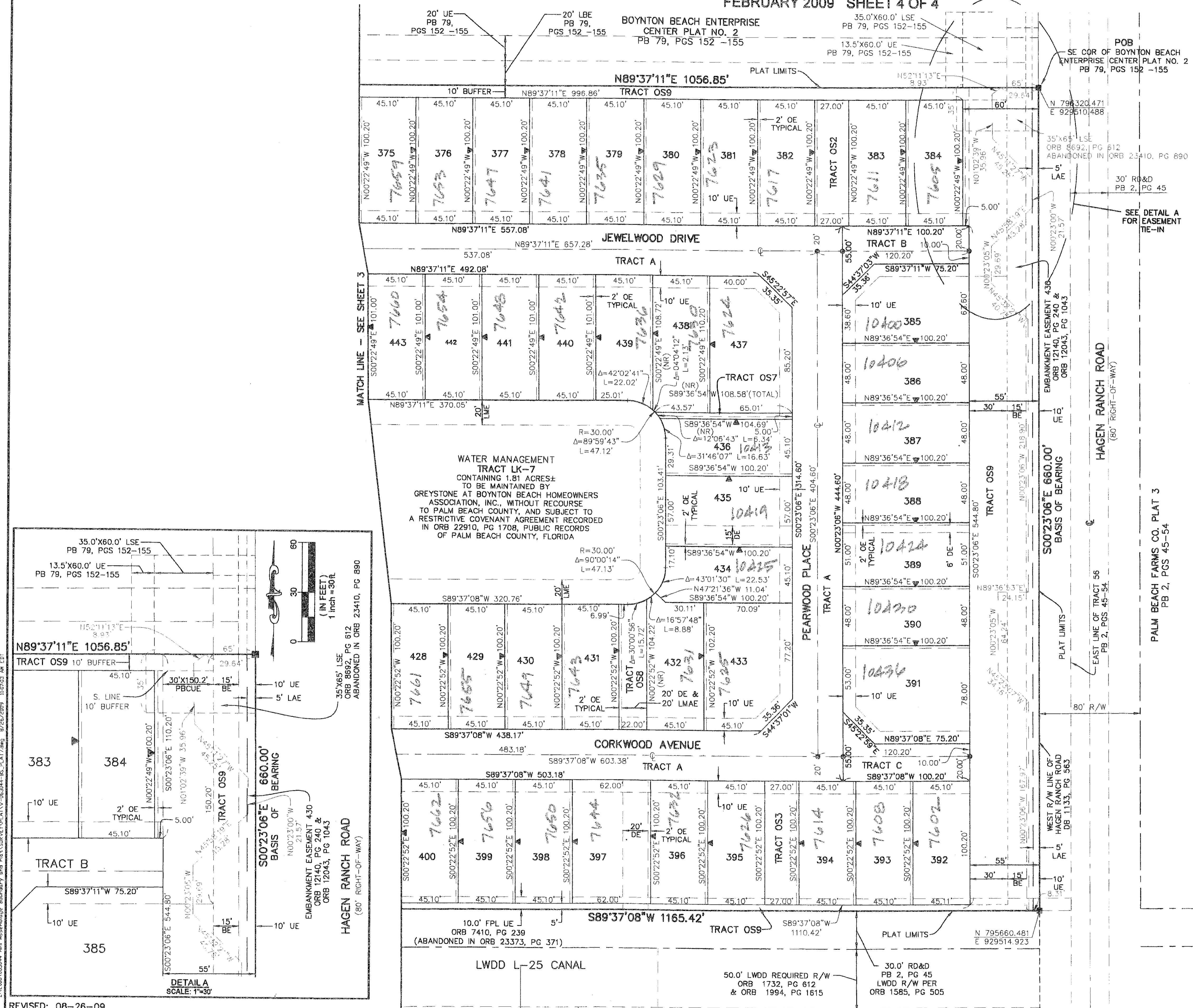
This Instrument Prepared By:
Ronnie L. Furniss, P.S.M.
 Certificate of Authorization No. LB 0791
 FEBRUARY 2009

Calvin, Giordano & Associates, Inc.
 Engineers Surveyors Planners
 580 Village Boulevard, Suite 340
 West Palm Beach, Florida 33409
 Phone: 561.884.6161 Fax: 561.884.6360



SHEET INDEX MAP
 NOT TO SCALE

- LEGEND:**
- BE = BUFFER EASEMENT
 - Δ = CENTRAL (DELTA) ANGLE
 - CH = CHORD
 - DB = DEED BOOK
 - DE = DRAINAGE EASEMENT
 - ESMT = EASEMENT
 - L = ARC LENGTH
 - LAE = LIMITED ACCESS EASEMENT
 - LBE = LANDSCAPE BUFFER EASEMENT
 - LMAE = LAKE MAINTENANCE ACCESS EASEMENT
 - LME = LAKE MAINTENANCE EASEMENT
 - LSE = LIFT STATION EASEMENT
 - LWDD = LAKE WORTH DRAINAGE DISTRICT
 - OE = OVERHANG EASEMENT
 - ORB = OFFICIAL RECORDS BOOK
 - PB = PLAT BOOK
 - PBCUE = PALM BEACH COUNTY UTILITY EASEMENT
 - POB = POINT OF BEGINNING
 - POC = POINT OF COMMENCEMENT
 - PRM = PERMANENT REFERENCE INSTRUMENT
 - P.U.D. = PLANNED UNIT DEVELOPMENT
 - PG(S) = PAGE(S)
 - P = PAGES
 - R,D&D = ROAD, DIKE AND DITCH REFERENCE
 - R/W = RIGHT-OF-WAY
 - UE = UTILITY EASEMENT
 - ☐ = CENTERLINE
 - = PERMANENT REFERENCE INSTRUMENT (SET 4"X 4" CONCRETE MONUMENT WITH A 3" ALUMINUM PLATE STAMPED TERM LB 6791)
 - ▼ = ZERO LOT LINE SHANK
 - = PERMANENT CONTROL POINT (FOUND "T" NAIL AND DCK LABELLED "LB 6791" PER MINI ASSEMBLAGE PLAT NO. 3, PLAT BOOK TWO, PAGES 14-15)
 - = PERMANENT CONTROL POINT (SET "T" NAIL AND DCK LABELLED "LB 6791")



REVISED: 08-26-09

Z:\2008\020844 Mini Assemblage Boundary and Plat\SUBMITTALS\B-PLAT7.dwg, 9/26/2009 10:02:03 AM EDT